

## carril alto CAA75

top track

código code

110500 \*\*\*

longitud length

5 m.

material material

aluminio aluminium

embalaje packaging

caja de 8 tiras 8 units box

\*\*\* acabado aluminio aluminium finish

A01

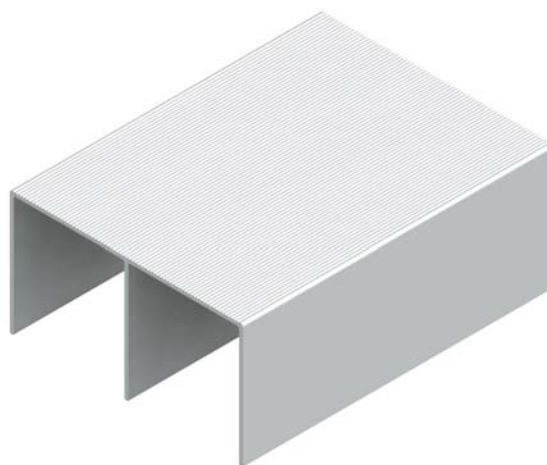
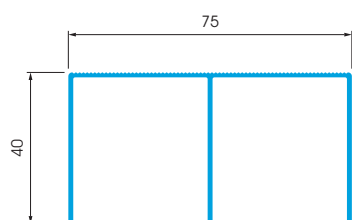
A02

A03

A04

A10

A11



disponible kit KG50 - KG75 (pag. 56, 57, 58) kit available

\*\*\* revestido sobre oro mate dull gold wrapping

C01

P02

C03

P04

C04

P05

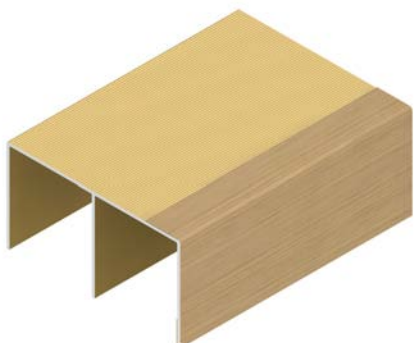
C05

P06

C06

P07

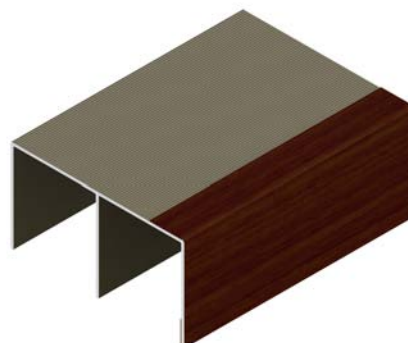
P08



\*\*\* revestido sobre bronce mate dull bronze wrapping

C02

P03



\*\*\* revestido sobre plata mate dull silver wrapping

ZPMC01

ZPMP02

R01

ZPMC02

ZPMP04

R02

ZPMC03

ZPMP05

R21

ZPMC04

ZPMP06

R22

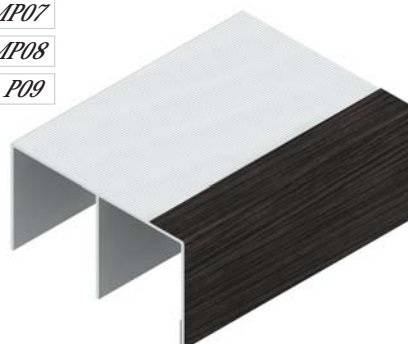
ZPMC05

ZPMP07

ZPMC06

ZPMP08

P09



## carril bajo 50 diente CBD50

bottom track

código code

111500 \*\*\*

longitud length

5 m.

material material

aluminio aluminium

embalaje packaging

paquete de 8 tiras 8 units package

\*\*\* acabados finishes

A01

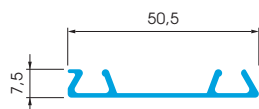
A02

A03

A04

A10

A11



disponible kit KG50 (pag. 56, 57) kit available

## carril bajo 75 diente CBD75

bottom track

código code

112500 \*\*\*

longitud length

5 m.

material material

aluminio aluminium

embalaje packaging

paquete de 8 tiras 8 units package

\*\*\* acabados finishes

A01 C01 P02 R01

A02 C02 P03 R02

A03 C03 P04 R21

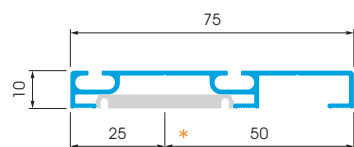
A04 C04 P05 R22

A10 C05 P06

A11 C06 P07

P08

P09



\* anclaje carril bajo bottom track fitting



disponible kit KG75 (pag. 58) kit available

## carril bajo empotrado CBE16

bottom track

código code

116500 \*\*\*

longitud length

5 m.

material material

aluminio aluminium

embalaje packaging

paquete de 16 tiras 16 units package

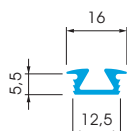
\*\*\* acabados finishes

A01

A02

A03

A04



## carril bajo 50 radio CBR50

## bottom track

código code

113500 \*\*\*

longitud length

5 m.

material material

aluminio aluminium

embalaje packaging

paquete de 8 tiras 8 units package

\*\*\* acabados finishes

A01

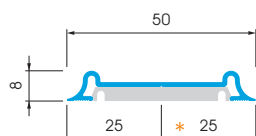
A02

A03

A04

A10

A11



\* anclaje carril bajo bottom track fitting



## carril bajo 75 radio CBR75

## bottom track

código code

114500 \*\*\*

longitud length

5 m.

material material

aluminio aluminium

embalaje packaging

paquete de 8 tiras 8 units package

\*\*\* acabados finishes

A01

C01

P02

A02

C02

P03

A03

C03

P04

A04

C04

P05

A10

C05

P06

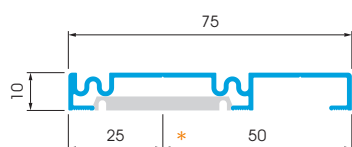
A11

C06

P07

P08

P09



\* anclaje carril bajo bottom track fitting



## carril bajo rueda oculta CBO75

## bottom track

código code

115500 \*\*\*

longitud length

5 m.

material material

aluminio aluminium

embalaje packaging

caja de 4 tiras 4 units box

\*\*\* acabados finishes

A01

C01

P02

A02

C02

P03

A03

C03

P04

A04

C04

P05

C05

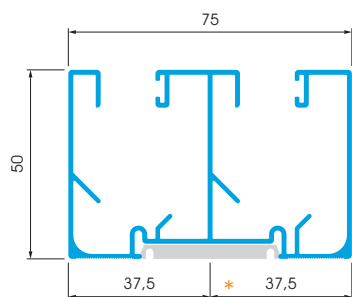
P06

C06

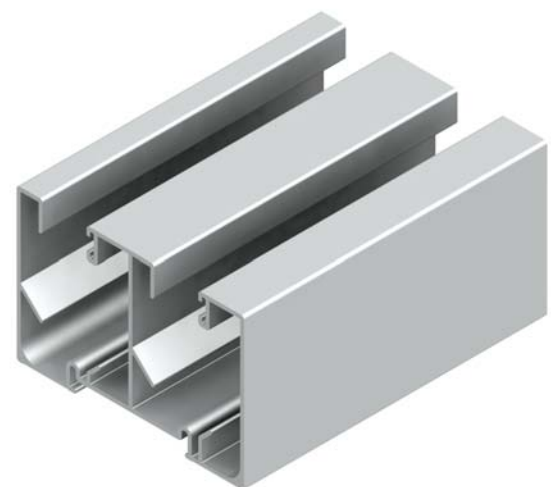
P07

P08

P09



\* anclaje carril bajo bottom track fitting



## tirador TR16

### handle profile

*código code*

150260 \*\*\*

*longitud length*

2,6 m.

*material material*

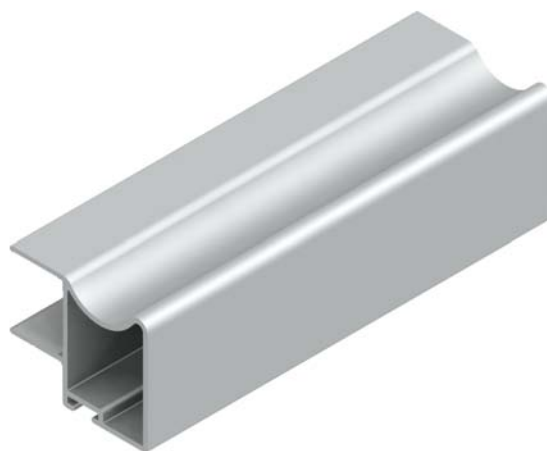
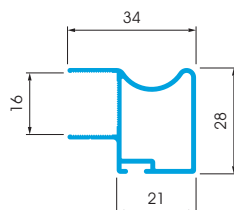
aluminio aluminium

*embalaje packaging*

caja de 20 tiras 20 units box

\*\*\* acabados finishes

A01	C01	P02
A02	C02	P03
A03	C03	P04
A04	C04	P05
A10	C05	P06
A11	C06	P07
		P08
		P09



disponible kit KP-TR16 (pag. 59) kit available

## tirador TR16ML

### handle profile

*código code*

151260 \*\*\*

*longitud length*

2,6 m.

*material material*

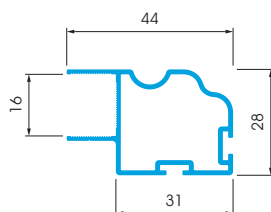
aluminio aluminium

*embalaje packaging*

caja de 16 tiras 16 units box

\*\*\* acabados finishes

A01	C01	P02
A02	C02	P03
A03	C03	P04
A04	C04	P05
	C05	P06
	C06	P07
		P08
		P09



disponible kit KP-TR16ML (pag. 59) kit available

## tirador TR16RD

### handle profile

*código code*

152260 \*\*\*

*longitud length*

2,6 m.

*material material*

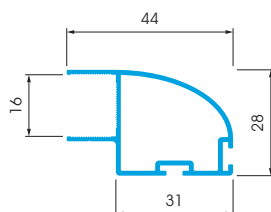
aluminio aluminium

*embalaje packaging*

caja de 16 tiras 16 units box

\*\*\* acabados finishes

A01	C01	P02
A02	C02	P03
A03	C03	P04
	C04	P05
	C05	P06
	C06	P07
		P08
		P09



disponible kit KP-TR16RD (pag. 59) kit available

## perfil remate 16 mm. PRU16

"U" profile

código code

121500 \*\*\*

longitud length

5 m.

material material

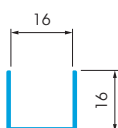
aluminio aluminium

embalaje packaging

paquete de 16 tiras 16 units package

\*\*\* acabados finishes

A01	C01	P02
A02	C02	P03
A03	C03	P04
A04	C04	P05
A10	C05	P06
A11	C06	P07
		P08
		P09



## perfil "H" 16 mm. PRH16

"H" profile

código code

123400 \*\*\*

longitud length

4 m.

material material

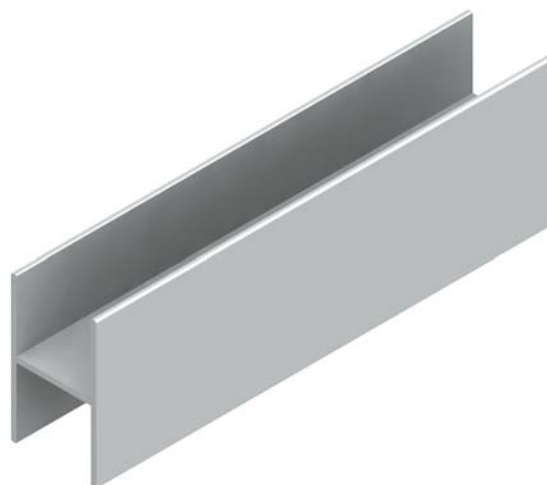
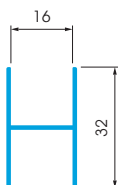
aluminio aluminium

embalaje packaging

paquete de 10 tiras 10 units package

\*\*\* acabados finishes

A01	C01	P02
A02	C02	P03
A03	C03	P04
A04	C04	P05
A10	C05	P06
A11	C06	P07
		P08
		P09



## perfil faldón 16 mm. PRF16

"H" profile

código code

125400 \*\*\*

longitud length

4 m.

material material

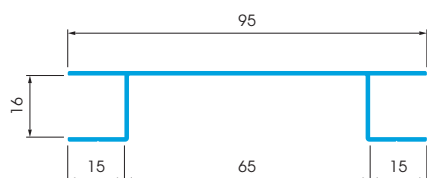
aluminio aluminium

embalaje packaging

paquete de 5 tiras 5 units package

\*\*\* acabados finishes

A01	C01	P02
A02	C02	P03
A03	C03	P04
A04	C04	P05
A10	C05	P06
A11	C06	P07
		P08
		P09



## tirador TR10

## handle profile

código *code*

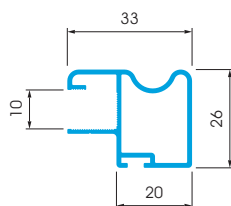
140260 \*\*\*

longitud *length*

2,6 m.

material *material*aluminio *aluminium*embalaje *packaging*caja de 20 tiras *20 units box*\*\*\* acabados *finishes*

A01	C01	P02
A02	C02	P03
A03	C03	P04
A04	C04	P05
A10	C05	P06
	C06	P07
		P08
		P09

disponible kit KP-TR10 (pag. 60) *kit available*

## tirador TR10CS

## handle profile

código *code*

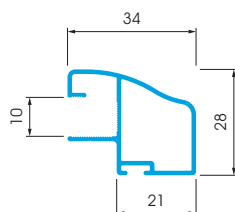
160260 \*\*\*

longitud *length*

2,6 m.

material *material*aluminio *aluminium*embalaje *packaging*caja de 20 tiras *20 units box*\*\*\* acabados *finishes*

A02	C01	P02
	C02	P03
	C03	P04
	C04	P05
	C05	P06
	C06	P07
		P08
		P09

disponible kit KP-TR10CS (pag. 60) *kit available*

## tirador TR10KB

## handle profile

código *code*

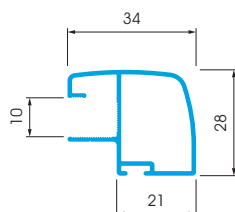
161260 \*\*\*

longitud *length*

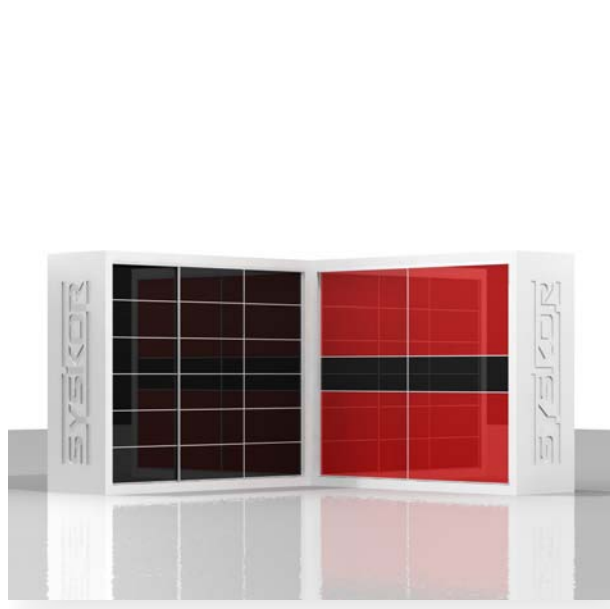
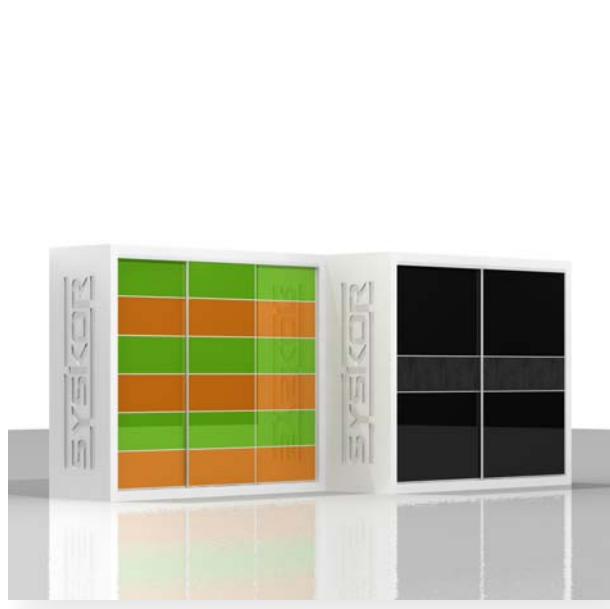
2,6 m.

material *material*aluminio *aluminium*embalaje *packaging*caja de 20 tiras *20 units box*\*\*\* acabados *finishes*

A02	C01	P02
	C02	P03
	C03	P04
	C04	P05
	C05	P06
	C06	P07
		P08
		P09

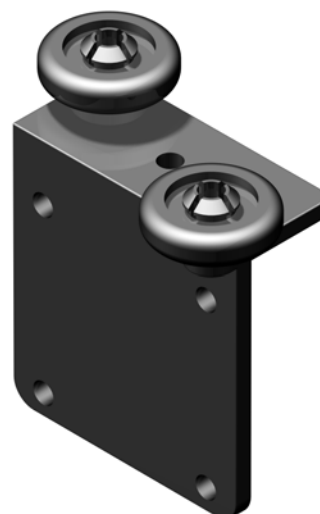
disponible kit KP-TR10KB (pag. 60) *kit available*





## rueda superior económica S75

upper roller

*código code**102ECOS75**material material**plástico plastic**acabado finish**negro black**embalaje packaging**bolsa de 300 unidades 300 units bag*

## rueda sup. 2 componentes S75 upper roller-composite

*código code**102COMS75**material material**plástico plastic**acabado finish**gris grey**embalaje packaging**bolsa de 50 unidades 50 units bag**caja de 500 unidades 500 units box*

## rueda sup. rodamiento S75 upper roller-ballbearings

*código code**102RODS75**material material**acero steel**acabado finish**zincado plata galvanized**embalaje packaging**bolsa de 50 unidades 50 units bag**caja de 200 unidades 200 units box*



## rueda inferior Ø35 diente

## bottom roller

código code

101D35001

material material

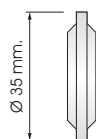
acero steel

acabado finish

zincado plata galvanized

embalaje packaging

caja de 100 unidades 100 units box



sistema 75/85 75/85 system

## rueda inferior Ø60 diente

## bottom roller

código code

101D60001

material material

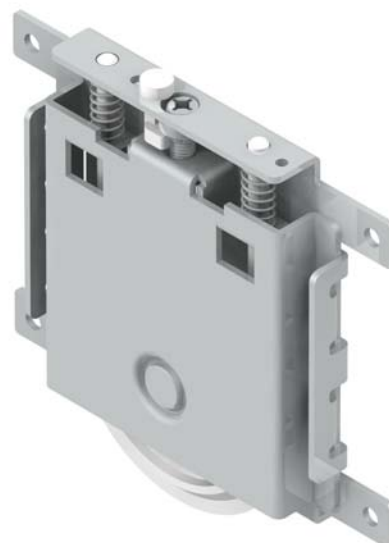
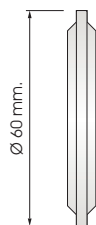
acero steel

acabado finish

zincado plata galvanized

embalaje packaging

caja de 50 unidades 50 units box



sistema 75/85 75/85 system

## rueda inferior Ø60 diente negra

## bottom roller

código code

101D60002

material material

acero steel

acabado finish

zincado negro black coating

embalaje packaging

caja de 50 unidades 50 units box



sistema 75/85 75/85 system