



Ferragens para vidro | Glass hardware | Herrajes para cristal





TABELA DE PESO DO VIDRO
TABLE OF WEIGHT OF GLASS
TABLA DE PESO DE VIDRIO

Kg por m²

ESPESSURA DO VIDRO
THICKNESS OF THE GLASS
ESPESOR DEL CRISTAL

8mm	20,00 Kg
10mm	25,00 Kg
12mm	30,00 Kg



Patch fittings

Sistemas para construção de divisórias em vidro de 10 ou 12 mm.

Corpo em alumínio lacado.

Tampas em aço inoxidável AISI304

Sistema de encaixe rápido

Parafusos de fixação do vidro em ambos os lados

Modelo patenteado

Fixing system for 10 or 12 mm glass panels .

Body made in aluminum with lacquering finish.

Covers made in stainless steel AISI304

Fast plug system

Screws for fixing the glass on both sides

Model patented

Sistema de fijación de paneles de cristal con 10 o 12 mm .

Cuerpo fabricado en aluminio lacado.

Cubiertas en acero inoxidable AISI304

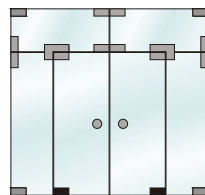
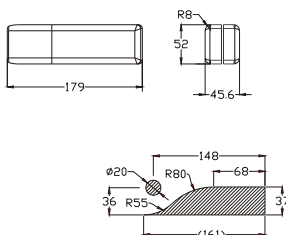
Sistema de encaje rápido

Tornillos de fijación del cristal en ambos lados

Modelo patentado



IN.81.001

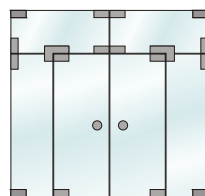
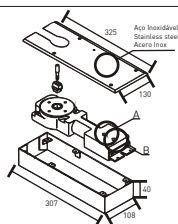


Giro inferior para vidro
Bottom patch fitting

IN.21.2201



Mola de pavimento
Floor door closer



POWER
3

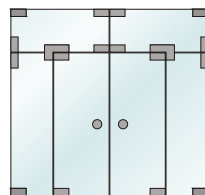
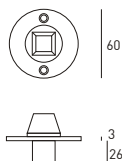


EN 1154
Listed



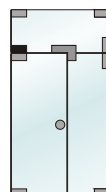
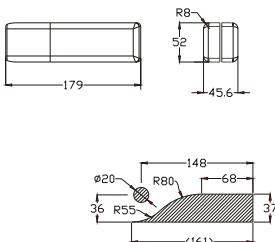
ACABAMENTO
FINNISH
ACABADO .IN

IN.81.105


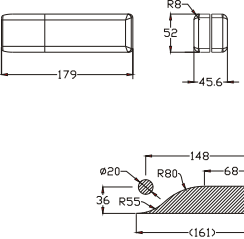
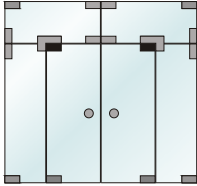

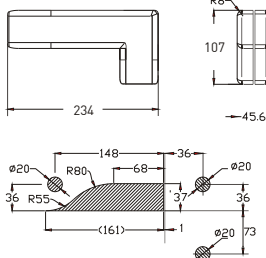
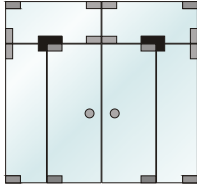

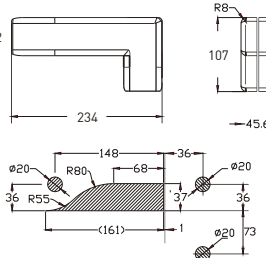
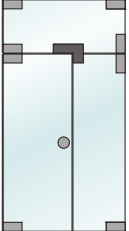

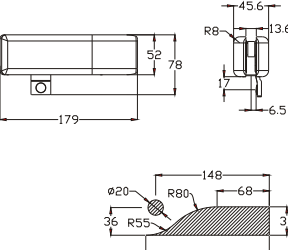
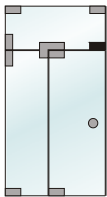


Giro de pavimento
Floor pivot

IN.81.002



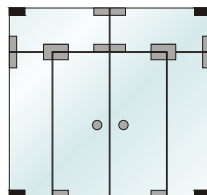
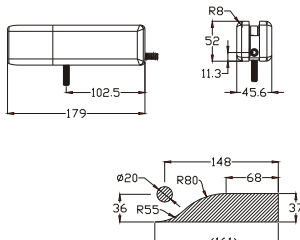
Suporte superior de giro para vidro
Overpanel pivot patch fitting

<p>IN.81.003</p> 		 <p>Giro superior para vidro Top patch fitting</p>
<p>IN.81.004</p> 		 <p>Suporte superior e lateral de giro para vidro Overpanel to sidepanel pivot patch fitting</p>
<p>IN.81.005</p> 		 <p>Suporte superior e lateral batente de porta Overpanel to sidepanel door stopper</p>
<p>IN.81.006</p> 		 <p>Batente de porta superior Overpanel door stopper</p>

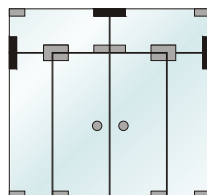
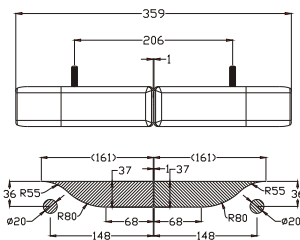
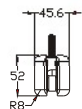
IN.81.007



Suporte de vidro de canto
Corner patch fitting

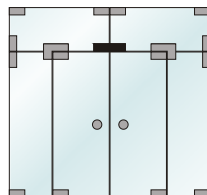
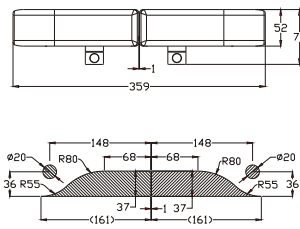
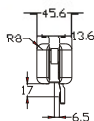
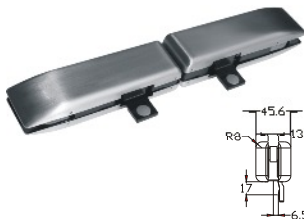


IN.81.008



Suporte de vidro duplo
Double patch fitting

IN.81.009



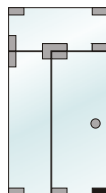
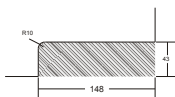
Batente de porta duplo
Double door stopper

IN.81.010

Fechadura de topo ou pavimento
com escudete de segurança
Bottom or top lock with security
escutecheon



Cilindro 30+30 não incluído
Cylinder 30+30 not included
Bombillo 30+30 no incluido



IN.81.218



Batente de porta para fixar no aro - Aço Inoxidável AISI 304
Door stopper to use in door frame - Stainless steel AISI 304
Tope para usar en el marco de la puerta -Acero AISI 304



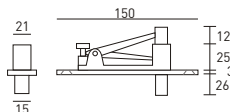
IN.81.219



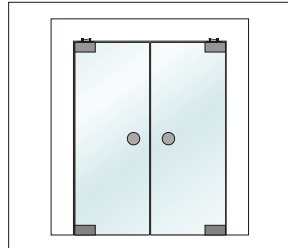
Batente de porta para fixar no vidro superior - Aço Inox AISI 304
Door stopper to use in upper glass - Stainless steel AISI 304
Tope para usar en el cristal superior -Acero inoxidable AISI 304



IN.05.197.S



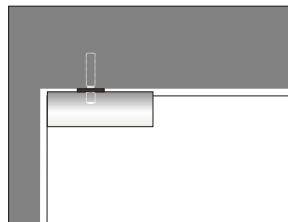
Giro superior para aro de porta
Top pivot for door frame



IN.81.217



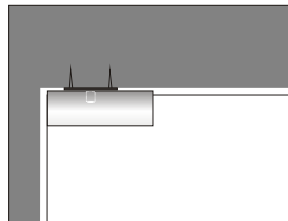
Pivot para tecto - Aço Inoxidável AISI 304
Ceilling pivot - Stainless steel AISI 304
Pivote para techo - Acero inoxidable AISI 304



IN.81.106



Pivot para tecto - Aço Inoxidável AISI 304
Ceilling pivot - Stainless steel AISI 304
Pivote para techo - Acero inoxidable AISI 304





Ssystem

- Mola de porta de dupla acção com abertura de 180° e paragem aos 90°
- Mola com força ajustável
- Carga máx. de abertura 0,5Kg.
- Largura máx. da porta 900 mm.
- Peso máx. 60 Kg.
- Espessura do vidro 8-12mm.
- Patente internacional

- Double action door in 180° opening each side 90° hold open
- Adjustable spring closing force
- Max. pulling force 0,5 Kg.
- Max. door width 900mm.
- Max. Weight up to 60 kg.
- Glass Thickness 8-12mm.
- International Patent

- Muelle de puerta de doble accion con apertura de 180° e freno al 90°
- Muelle con fuerza ajustable
- Carga máx. de abertura 0,5Kg.
- Anchura máx. de la puerta 900 mm.
- Peso máx. 60 Kg.
- Espesor del cristal 8-12mm.
- Patente Internacional

Ssystem

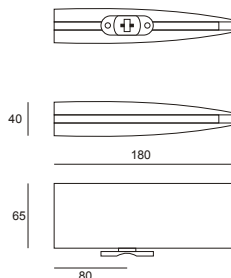
IN.81.200



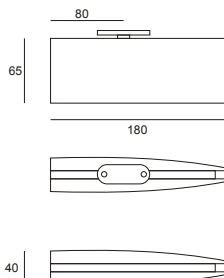
- Mola de porta de dupla acção com abertura de 180° e paragem aos 90°
- Mola com força ajustável
- Carga máx. de abertura 0,5Kg.
- Largura máx. da porta 900 mm.
- Peso máx. 60 Kg.
- Espessura do vidro 8-12mm.
- Patente internacional

- Double action door in 180° opening each side 90° hold open
- Adjustable spring closing force
- Max. pulling force 0,5 Kg.
- **Max. door width 900mm.**
- **Max. Weight up to 60 kg.**
- **Glass Thickness 8-12mm.**
- International Patent

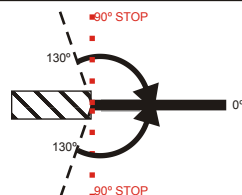
Peça para aplicar no pavimento
Part to use in the floor
Pieza para utilizar en el suelo



Peça para aplicar no topo
Part to use in the door frame
Pieza para utilizar en el topo



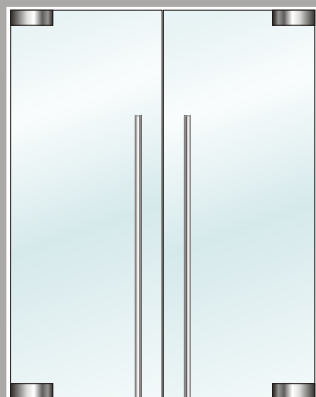
- Muelle de puerta de doble accion con apertura de 180° e freno al 90°
- Muelle con fuerza ajustable
- Carga máx. de abertura 0,5Kg.
- Anchura máx. de la puerta 900 mm.
- Peso máx. 60 Kg.
- Espesor del cristal 8-12mm.
- Patente Internacional

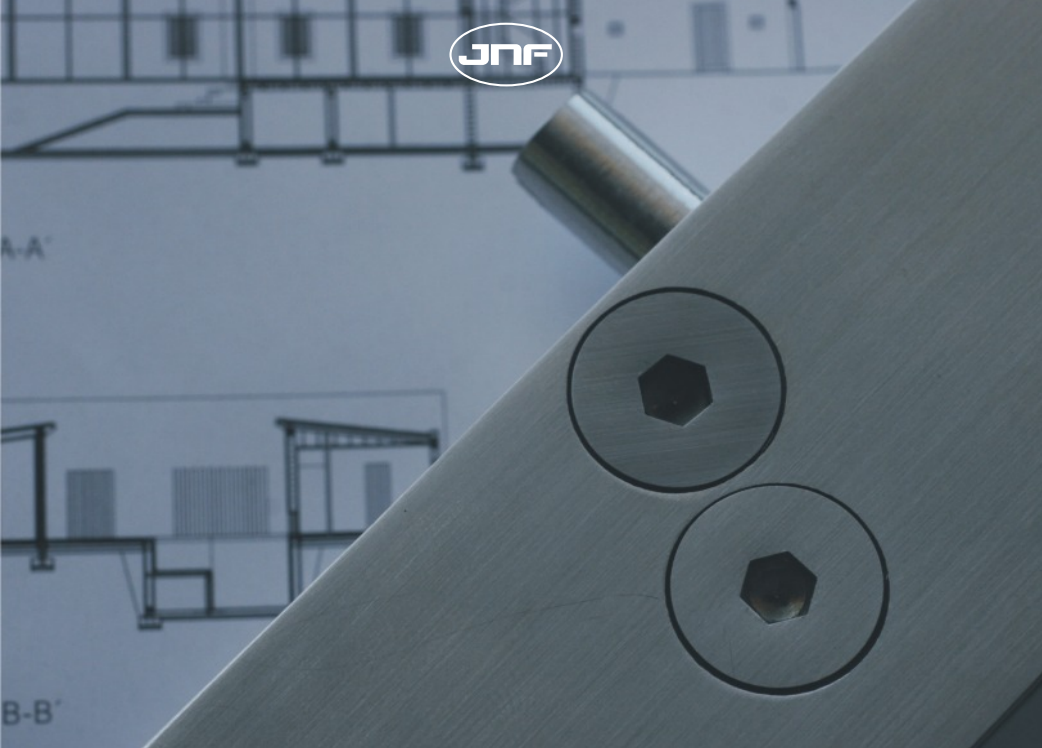



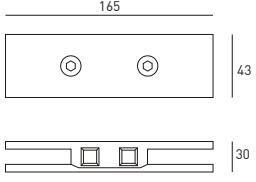
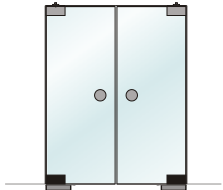

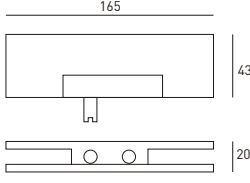
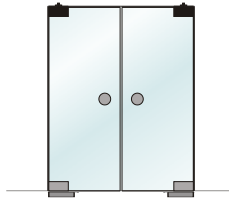

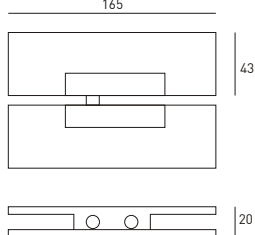
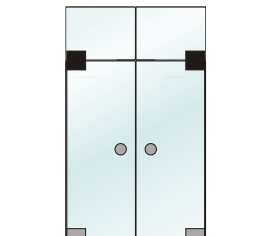

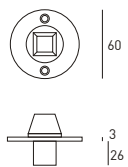
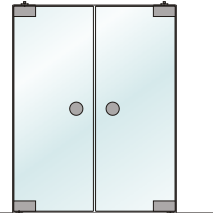

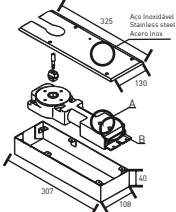
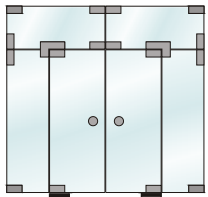
Parafuso de ajuste da
carga da mola

Screw to adjust the
door closer strenght

Tornillo para ajustar la
fuerza de lo cierra
puerta





<p>IN.81.101</p>  <p>Braço inferior - reversível Lower arm - reversible Brazo inferior - reversible</p>		
<p>IN.81.102</p>  <p>Braço superior com pivot - reversível Upper arm with pivot - reversible Brazo superior con pivot - reversible</p>		
<p>IN.81.103</p>  <p>Braço superior e suporte ao vidro Reversível Upper arm and glass support Reversible Brazo superior y soporte al cristal Reversible</p>		
<p>IN.81.105</p>  <p>Giro de pavimento Floor pivot</p>		
<p>IN.21.2201</p>  <p>Mola de pavimento Floor door closer</p>	 <p>Aço Inoxidável Stainless steel Acero Inox</p>	



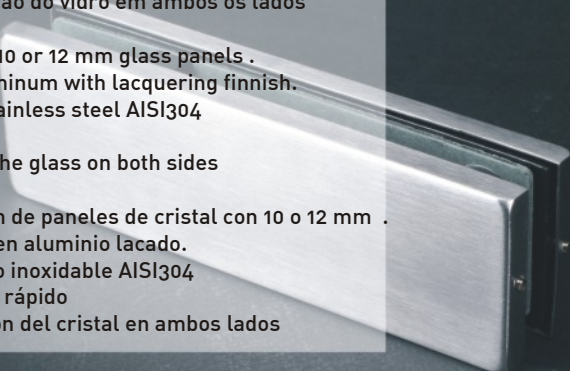
Patch fittings


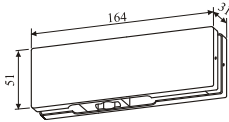
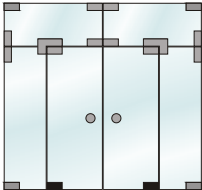

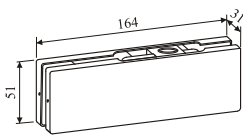
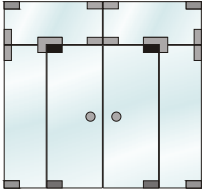

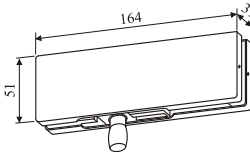
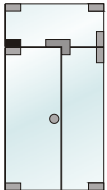

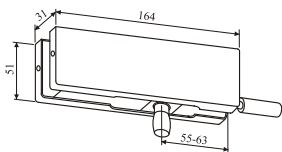
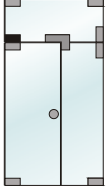

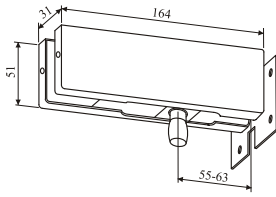
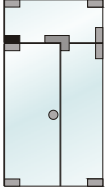


Sistema de fixação de painéis em vidro de 10 ou 12 mm.
Corpo em alumínio lacado.
Tampas em aço inoxidável AISI304
Sistema de encaixe rápido
Parafusos de fixação do vidro em ambos os lados

Fixing system for 10 or 12 mm glass panels .
Body made in aluminum with lacquering finish.
Covers made in stainless steel AISI304
Fast plug system
Screws for fixing the glass on both sides

Sistema de fijación de paneles de cristal con 10 o 12 mm .
Cuerpo fabricado en aluminio lacado.
Cubiertas en acero inoxidable AISI304
Sistema de encaje rápido
Tornillos de fijación del cristal en ambos lados



<p>IN.81.110</p> <p>Kit que permite fazer as funções abaixo descritas.</p> <p>São fornecidas os elementos necessários na mesma embalagem</p>	<p>Kit that allows to create the functions described below.</p> <p>In the same package are supplied the necessary elements</p>	<p>Kit que permite crear las funciones que se describe abajo.</p> <p>En el mismo paquete se suministran los elementos necesarios</p>
 <p>Giro inferior para vidro Bottom patch fitting</p>		
 <p>Suporte superior de giro para vidro Overpanel pivot patch fitting</p>		
 <p>Giro superior para vidro Top patch fitting</p>		
 <p>Giro superior para vidro Top patch fitting</p>		
 <p>Giro superior para vidro Top patch fitting</p>		

IN.81.111

Kit que permite fazer as funções abaixo descritas.

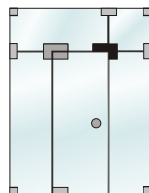
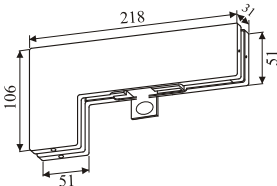
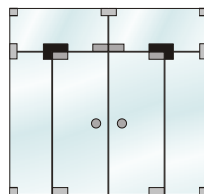
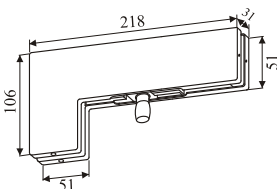
São fornecidas os elementos necessários na mesma embalagem

Kit that allows to create the functions described below.

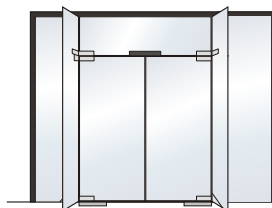
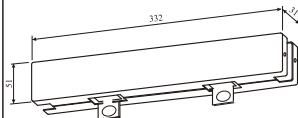
In the same package are supplied the necessary elements

Kit que permite crear las funciones que se describe abajo.

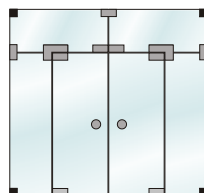
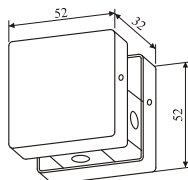
En el mismo paquete se suministran los elementos necesarios



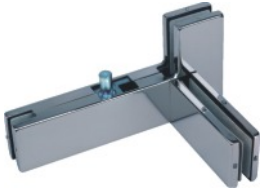
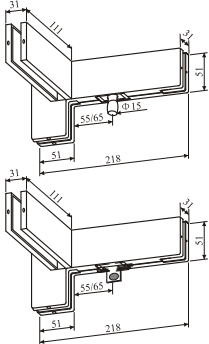
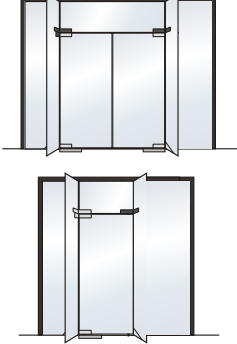

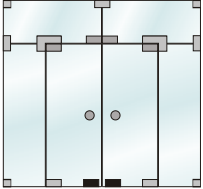

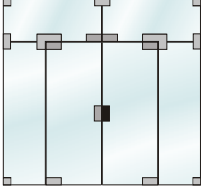

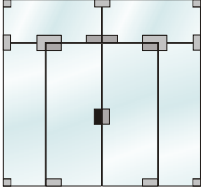
IN.81.112



IN.81.113



<p>IN.81.114</p>		
<p>IN.81.117</p>		
<p>IN.81.118</p>		
<p>IN.81.119</p>		
<p>IN.81.116</p>	<p>Cilindro 30+30 não incluído Cylinder 30+30 not included Bombillo 30+30 no incluido</p>	<p>Fechadura de topo ou pavimento Bottom or top lock</p>

<p>Kit que permite fazer as funções abaixo descritas. São fornecidas os elementos necessários na mesma embalagem Existe direita e esquerda</p>	<p>Kit that allows to create the functions described below. In the same package are supplied the necessary elements Existes right and left hand</p>	<p>Kit que permite crear las funciones que se describe abajo. En el mismo paquete se suministran los elementos necesarios Tenemos derecha y izquierda</p>
		<p>IN.81.115.D IN.81.115.E</p> 
<p>IN.81.120</p> 	<p>Cilindro 30+30 incluído (cilindro de construção) Cylinder 30+30 included (building cylinder) Bombillo 30+30 incluído (bombillo de construcción)</p>	 <p>Fechadura de pavimento Bottom lock</p>
<p>IN.81.121</p> 	<p>Cilindro 30+30 incluído (cilindro de construção) Cylinder 30+30 included (building cylinder) Bombillo 30+30 incluído (bombillo de construcción)</p>	 <p>Fechadura com cilindro europeu Lock with european cylinder</p>
<p>IN.81.122</p> 		 <p>Testa para fechadura Strike box for lock</p>

IN.81.218



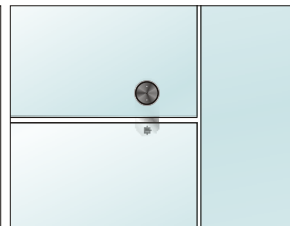
Batente de porta para fixar no aro - Aço Inoxidável AISI 304
Door stopper to use in door frame - Stainless steel AISI 304
Tope para usar en el marco de la puerta - Acero AISI 304



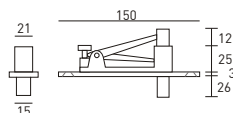
IN.81.219



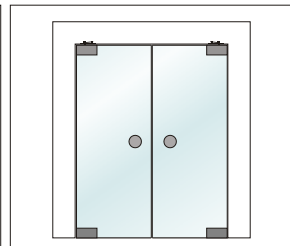
Batente de porta para fixar no vidro superior - Aço Inox AISI 304
Door stopper to use in upper glass - Stainless steel AISI 304
Tope para usar en el cristal superior - Acero inoxidable AISI 304



IN.05.197.S



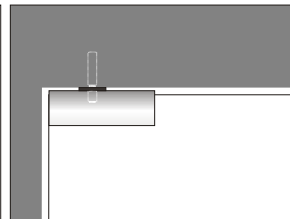
Giro superior para aro de porta
Top pivot for door frame



IN.81.217



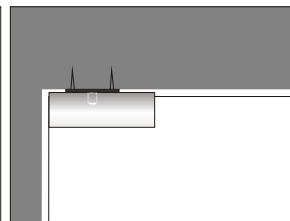
Pivot para tecto - Aço Inoxidável AISI 304
Ceilling pivot - Stainless steel AISI 304
Pivote para techo - Acero inoxidable AISI 304



IN.81.106



Pivot para tecto - Aço Inoxidável AISI 304
Ceilling pivot - Stainless steel AISI 304
Pivote para techo - Acero inoxidable AISI 304





Sistemas para construção de divisórias em vidro
de 10 ou 12 mm.
Aço inoxidável AISI304

Fixing system for 10 or 12 mm glass panels .
Stainless steel AISI304

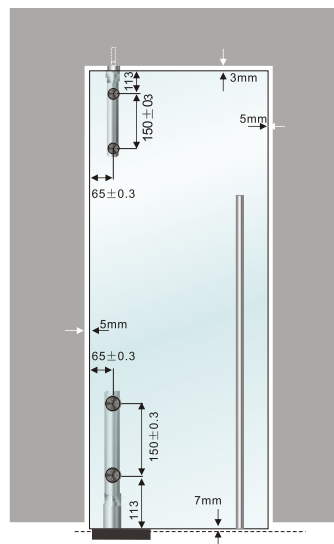
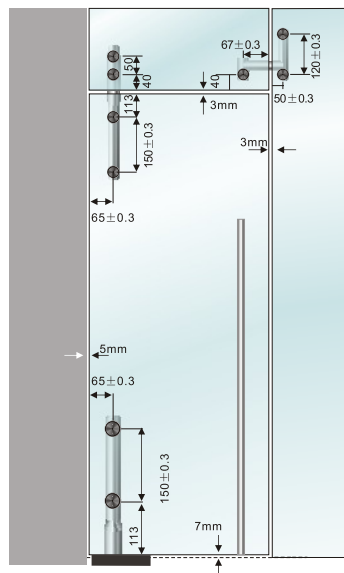
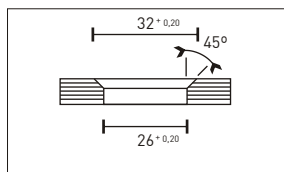
Sistema de fijación de paneles de cristal con 10 o 12 mm .
Acero inoxidable AISI304

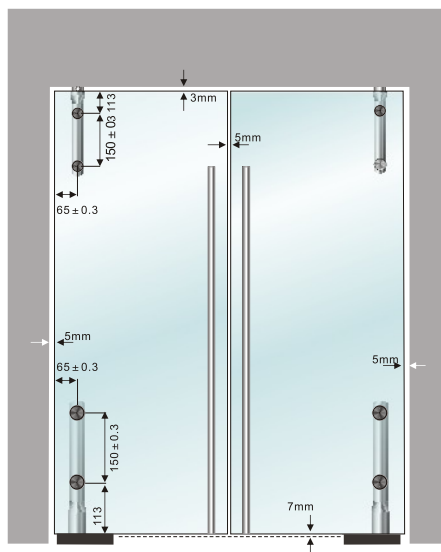
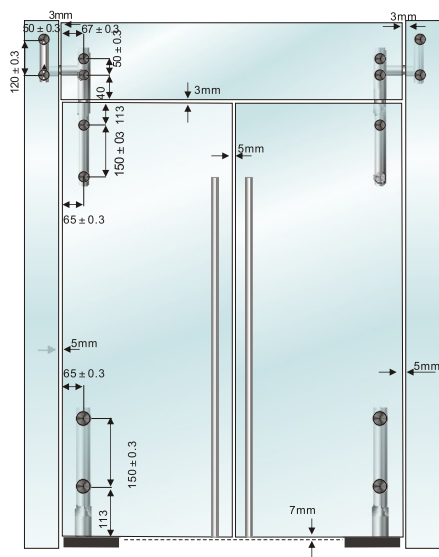
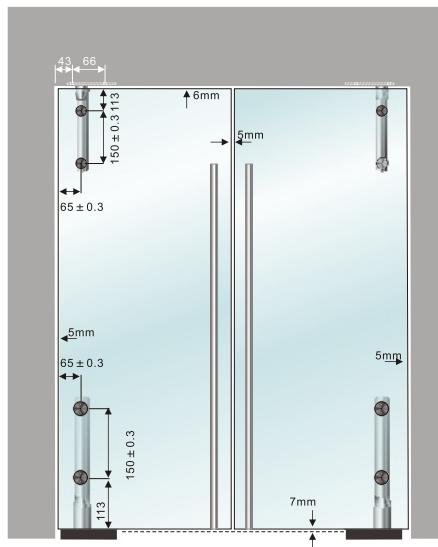
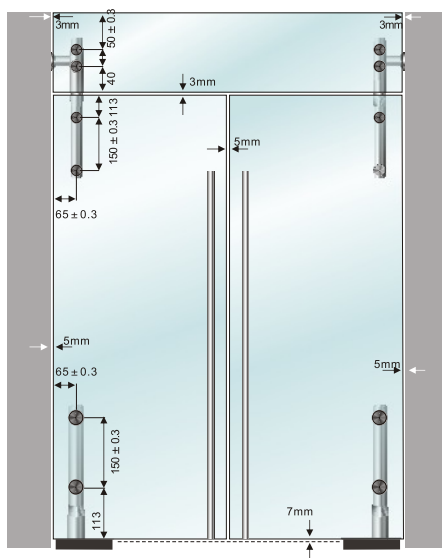
Lsystem

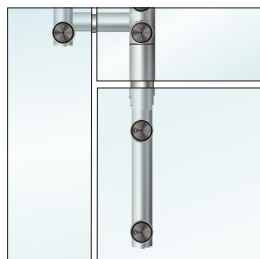
Lsystem



Furo do vidro - Glass drill
Agujero de lo cristal

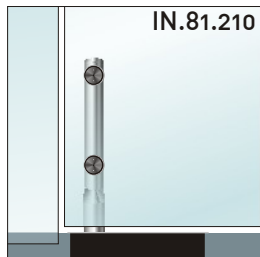






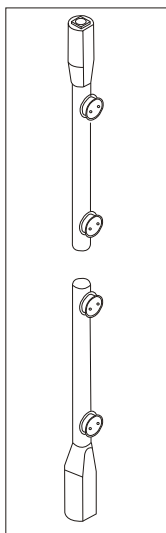
Conjunto de pivot superior e inferior para portas de vidro.
Carga máxima: 100kg.
Para vidro de 10 a 12mm.
Aço Inoxidável AISI 304
Pode ser aplicado numa mola ou num giro de pavimento.

Upper and bottom pivot Kit for glass doors
Maximum load :100 Kg.
For glass 10 to 12mm
Stainless steel AISI 304
Can work with a floor closer or a floor pivot.



IN.81.210

Conjunto de pivote superior y inferior para cristal.
Peso maximo de la puerta: 100Kg.
Para cristal de 10 hasta 12 mm.
Acero inoxidable AISI 304
Puede funcionar con un cierra puertas de suelo o con un pivote de suelo.

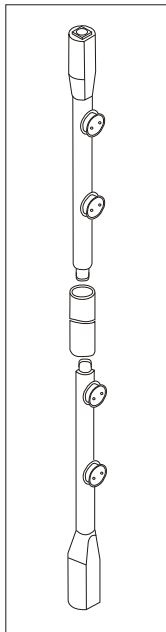


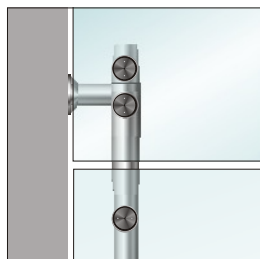
IN.81.211

Conjunto de pivot superior e inferior para portas de vidro.
Inclui tubo de ligação com 1500mm.
Carga máxima: 100kg.
Para vidro de 10 a 12mm.
Aço Inoxidável AISI 304
Pode ser aplicado numa mola ou num giro de pavimento.

Upper and bottom pivot Kit for glass doors
Includes connecting tube with 1500mm.
Maximum load :100 Kg.
For glass 10 to 12mm
Stainless steel AISI 304
Can work with a floor closer or a floor pivot.

Conjunto de pivote superior y inferior para cristal.
Inclui tubo de conneccion con 1500mm.
Peso maximo de la puerta: 100Kg.
Para cristal de 10 hasta 12 mm.
Acero inoxidable AISI 304
Puede funcionar con un cierra puertas de suelo o con un pivote de suelo.





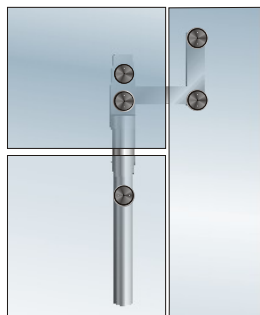
Pivot para painel de vidro superior com suporte lateral à parede.
Para vidro de 10 a 12mm.
Aço Inoxidável AISI 304
Reversível

Overpanel pivot for glass with wall fixing
For glass 10 to 12mm
Stainless steel AISI 304
Reversible

IN.81.212



Pivote para cristal superior y fijación a la pared lateral
Para cristal de 10 hasta 12 mm.
Acero inoxidable AISI 304
Reversible

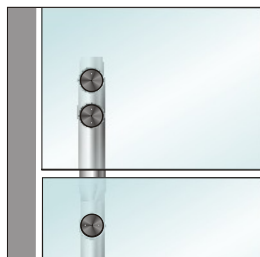


Pivot para painel de vidro superior e lateral.
Para vidro de 10 a 12mm.
Aço Inoxidável AISI 304
Reversível

Overpanel and side panel pivot for glass
For glass 10 to 12mm
Stainless steel AISI 304
Reversible

Pivote para cristal superior y lateral
Para cristal de 10 hasta 12 mm.
Acero inoxidable AISI 304
Reversible

IN.81.213

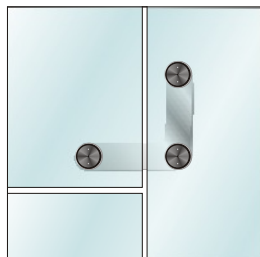


Pivot para painel de vidro superior
Para vidro de 10 a 12mm.
Aço Inoxidável AISI 304

Overpanel pivot for glass
For glass 10 to 12mm
Stainless steel AISI 304

Pivote para cristal superior.
Para cristal de 10-12 mm.
Acero inoxidable AISI 304

IN.81.214



Fixação de vidro superior e lateral
Para vidro de 10 a 12mm.
Aço Inoxidável AISI 304. Reversível

Over and side panel fixing for glass
For glass 10 to 12mm
Stainless steel AISI 304. Reversible

Fijación para cristal superior y lateral.
Para cristal de 10-12 mm.
Acero inoxidable AISI 304. Reversible

IN.81.215



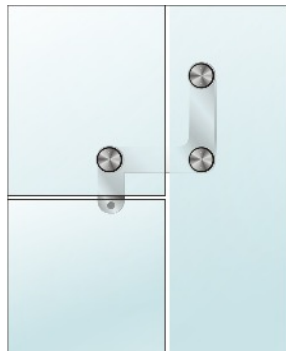
IN.81.216



Fixação de vidro superior e lateral com travão
Para vidro de 10 a 12mm.
Aço Inoxidável AISI 304.
Reversível

Over and side panel fixing for glass with stopper
For glass 10 to 12mm
Stainless steel AISI 304.
Reversible

Fijación para cristal superior y lateral con freno
Para cristal de 10-12 mm.
Acero inoxidable AISI 304.
Reversible



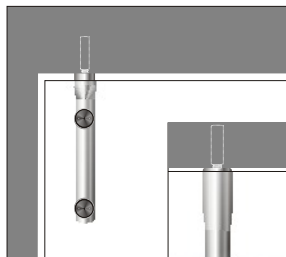
IN.81.217



Pivot para tecto
Aço Inoxidável AISI 304

Ceilling pivot .
Stainless steel AISI 304

Pivote para techo
Acero inoxidable AISI 304



IN.81.218



Batente de porta para fixar no aro
Aço Inoxidável AISI 304

Door stopper to use in door frame .
Stainless steel AISI 304

Tope para usar en el marco de la puerta
Acero inoxidable AISI 304



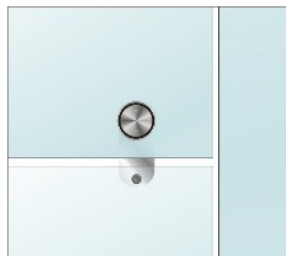
IN.81.219



Batente de porta para fixar no vidro superior
Aço Inoxidável AISI 304

Door stopper to use in upper glass.
Stainless steel AISI 304

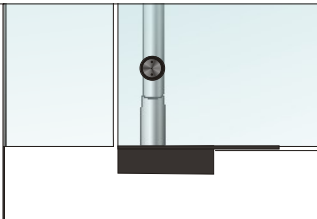
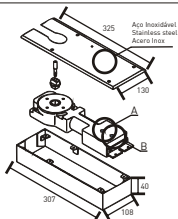
Tope para usar en el cristal superior
Acero inoxidable AISI 304



IN.21.2201



Mola de pavimento
Floor door closer



POWER
3



STOP



EN 1154
Listed

TEST
500.000
cycles



3 Anos
Garantia



1 pcs.



4 pcs.

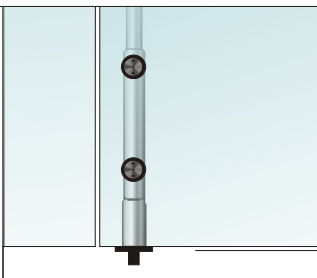
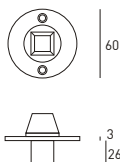
ACABAMENTO
FINNISH
ACABADO

.IN

IN.81.105



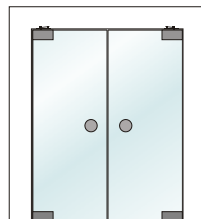
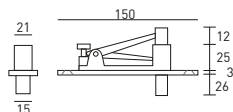
Giro de pavimento
Floor pivot



IN.05.197



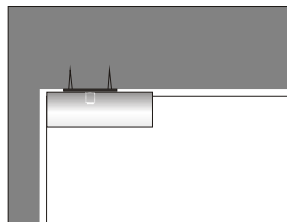
Giro superior para aro de porta
Top pivot for door frame



IN.81.106



Pivot para tecto - Aço Inoxidável AISI 304
Ceiling pivot - Stainless steel AISI 304
Pivote para techo - Acero inoxidable AISI 304





Dobradiça para portas em vidro de 8 a 12 mm.
Aço inoxidável AISI304
Carga máx por porta com 2 dobradiças 55KG
Largura máxima da porta 1000mm

Hinge for glass doors with 8 to 12 mm thickness .
Stainless steel AISI304
Máx door load with 2 hinges 55KG
Máx door width 1000mm.

Bisagra para puertas de cristal con 8 hasta 12 mm de espesor.
Acero inoxidable AISI304. Carga maxima de la puerta con 2 bisagras 55Kg.
Anchura maxima de la puerta 1000mm.



